



Cintiq®

Software User's Manual

CONTENTS

About the manual	2
Navigating the manual	3
CUSTOMIZING	4
Opening the control panel	4
Control panel overview	5
Control panel settings	6
Calibrating the pen display	7
Customizing the pen	8
Optional pens	8
Adjusting tip feel and double-click	9
Adjusting eraser feel	10
Advanced tip and eraser pressure settings	11
Customizing tool buttons	12
Button functions	13
Customizing tilt sensitivity	18
Using Cintiq with other monitors	18
Customizing the tablet functions	19
Customizing ExpressKeys	20
Customizing tablet Touch Strips	21
Advanced Touch Strip settings	24
Customizing the Pop-up Menu	25
Working with Display Toggle	26
Working with multiple tools	27
Working with application-specific settings	28
Creating an application-specific setting	29
Changing settings for a specific tool and application	30
Removing application-specific settings	30
Changing the tablet mode	31
Installing multiple tablets	31
GLOSSARY	32
INDEX	34





ABOUT THE MANUAL

This document provides quick access to information about the Cintiq pen display. Click on a navigation button or highlighted word to move through the document. The information is common to Windows and Macintosh computers and Windows screen captures are shown, unless otherwise noted.

Note: This manual does not contain information for installing Cintiq. Please refer to your product installation guide for details on installing Cintiq.

If you are new to electronic documentation, be sure to read [navigating the manual](#).

- SMALL CAPITAL LETTERS are used to identify the names of keyboard keys, dialog boxes, and control panel options.
- Remember that you can always use your viewer zoom-in tool to increase the size of the page on your display screen.
- The following kinds of information are not included with this product: information about your specific computer hardware or operating system, or information about your application software. Your best source for this information is the set of manuals and disks that came with your hardware, operating system, or application.
- Many graphics applications have built-in support for Cintiq features (such as pressure sensitivity, tilt, rotation, Tool ID, and airbrush simulation). Visit Wacom's web site to find a listing of applications that support these features. For information on how best to use Cintiq features within a specific application, see the instructions in that application's manuals.





NAVIGATING THE MANUAL

Use the navigation controls to move through the manual:



Go to front page.

CONTENTS

Go to table of contents.

INDEX

Go to index.



Go back to previous view.



Page back, or page forward.

HEADING TEXT

Go to beginning of section.

topic

Go to topic.



Topic continued.

Adobe Reader provides you with additional tools for using and printing the manual. See the Adobe Reader help for more information.





CUSTOMIZING

After you master the basics of using your Cintiq pen display, you may want to customize the way Cintiq works. This chapter describes how to use the Wacom Tablet control panel to adjust your pen display and input tool settings.

Advanced users can learn how to further optimize Cintiq by creating [application-specific settings](#).

[Opening the control panel](#)

[Control panel overview](#)

[Control panel settings](#)

OPENING THE CONTROL PANEL

To open the Wacom Tablet control panel, use the Cintiq pen on the pen display:

- **Windows.** Click on the Windows START button and choose ALL PROGRAMS. (For Windows 2000, choose the PROGRAMS group.) Then select WACOM TABLET and choose the WACOM TABLET PROPERTIES option.
- **Macintosh.** Open SYSTEM PREFERENCES from either the Dock, the Apple menu, or from the APPLICATIONS folder. Then click on the WACOM TABLET icon.

After you have opened the control panel, you can begin customizing Cintiq.





Control panel lists and tabs: The control panel TABLET, TOOL, and APPLICATION lists allow you to select the tablet, tool, or application for which you want to change settings. To change tool settings, open the control panel and either choose tablet FUNCTIONS or the tool you want to customize. See [customizing the pen](#) and [customizing the tablet functions](#) for more information.

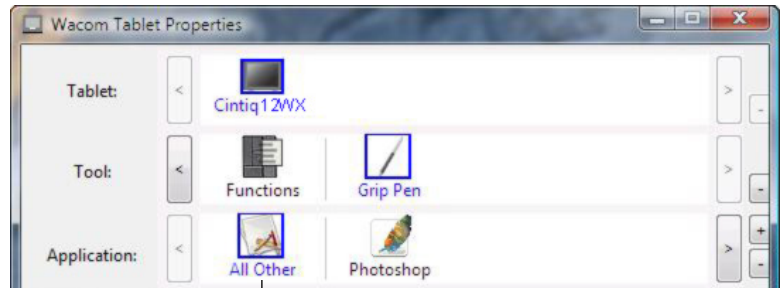
The TABLET list displays an icon for any supported tablet that has been installed on your system. All settings shown below this list apply to the selected tablet.

The TOOL list displays an icon for the tablet FUNCTIONS, and for each Cintiq input tool that has been used on the tablet.

When a tool is first used on the tablet it is automatically added to the tool list.

- A newly added tool will function with the default settings.
- If a similar tool was previously added, the new tool will inherit the settings of the previously added tool. These settings can then be customized for the newly added tool.
- See also [working with multiple tools](#).

The APPLICATION list lets you define tool settings that only apply to a specific application. See [working with application-specific settings](#).



Your current selections are highlighted.

Note: The control panel APPLICATION list is for advanced users; it is not necessary to select or add applications in order to customize your Cintiq input tool(s).

CONTROL PANEL SETTINGS

Use these sections as a reference when working with the Wacom Tablet control panel; they provide detailed information about each tab and some of the more complex topics. Many of the sections also contain useful customizing tips.

[Calibrating the pen display](#)

[Customizing the pen](#)

[Customizing the tablet functions](#)

[Customizing the Pop-up Menu](#)

[Working with Display Toggle](#)

[Working with multiple tools](#)

[Working with application-specific settings](#)

[Changing the tablet mode](#)

[Installing multiple tablets](#)





CALIBRATING THE PEN DISPLAY

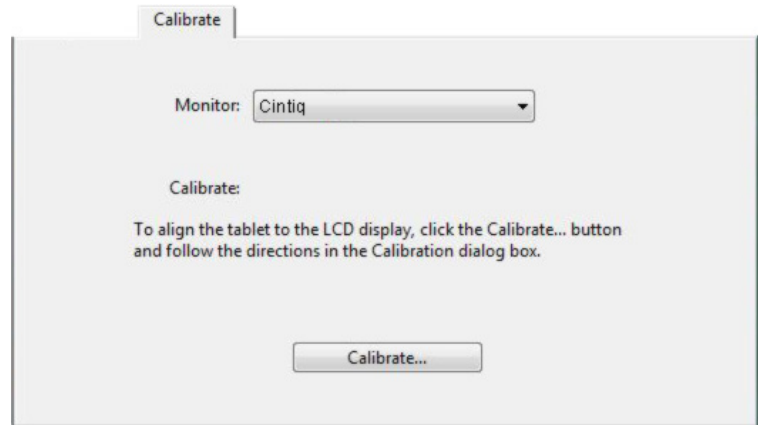
You will need to calibrate the pen display tablet in order to align the screen cursor position with the position of the pen on the display screen. This is required to adjust for parallax caused by the display screen cover glass and coating. Set Cintiq in its working position, then follow the procedure below.

Important: When using a VGA connection with Cintiq, make sure the LCD monitor is properly adjusted before calibrating the tablet.

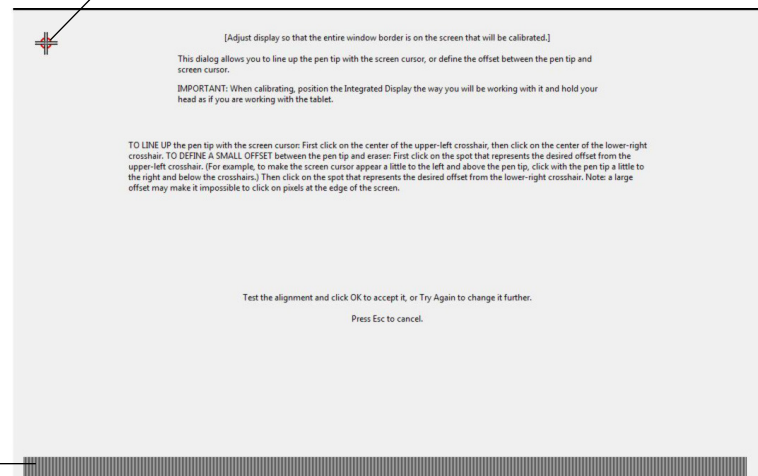
1. In the Wacom Tablet control panel, select the Grip Pen from the TOOL list and then select the CALIBRATE tab.
2. If you are working with multiple monitors, select the MONITOR option corresponding to the Cintiq display. (Only monitors that are set to one of the resolutions supported by Cintiq will appear in the list.)
3. Click on the CALIBRATE... button to activate the calibration screen.
4. Hold the pen and position your head as you normally do when working with the tablet. Use the pen tip to click on the center of the crosshairs in the upper-left corner.
5. Then click on the center of the crosshairs that are displayed in the lower-right corner.
6. Test the alignment by positioning the pen at a few different points on the display. Click OK to accept the calibration. Click TRY AGAIN to recalibrate.

Be sure to read the directions in the calibration screen for detailed instructions and additional options. The calibration setting applies to all applications.

Note: If more than one pen display tablet is installed on your system, be sure to select the Cintiq unit you are working with from the control panel's TABLET list.



Crosshairs



Adjustment pattern for pitch and phase.

See the Cintiq Installation Guide and Hardware Manual for details on adjusting pitch and phase for a VGA connection.

Tip: If you prefer to see the screen cursor slightly offset from the actual position of the pen tip, calibrate by clicking on a spot showing that offset from the crosshairs. For example, to have the screen cursor appear 1/10th of an inch above and to the left of the pen tip, calibrate by clicking on a spot 1/10th of an inch below and to the right of the crosshairs.





CUSTOMIZING THE PEN

Customizing your Cintiq pen is easy. First open the Wacom Tablet control panel using the pen. The pen will be selected in the TOOL list and the appropriate tabs will be displayed. Select a tab and choose from the available options.



OPTIONAL PENS

Wacom offers a number of optional pens, such as the Art Pen and Airbrush, that are compatible for use with Cintiq. (See the Cintiq Installation Guide and Hardware Manual for more information.) These tools are fully supported in the driver software, and will appear in the Wacom Tablet control panel TOOL list after touching the active area of the pen display with the pen tip. The control panel will automatically update to show the new tool and the options available for customization.

In applications supporting the features of these pens, you can adjust the functionality of the Art Pen rotation or the Airbrush fingerwheel within the application. Please refer to the documentation that came with your application for details.

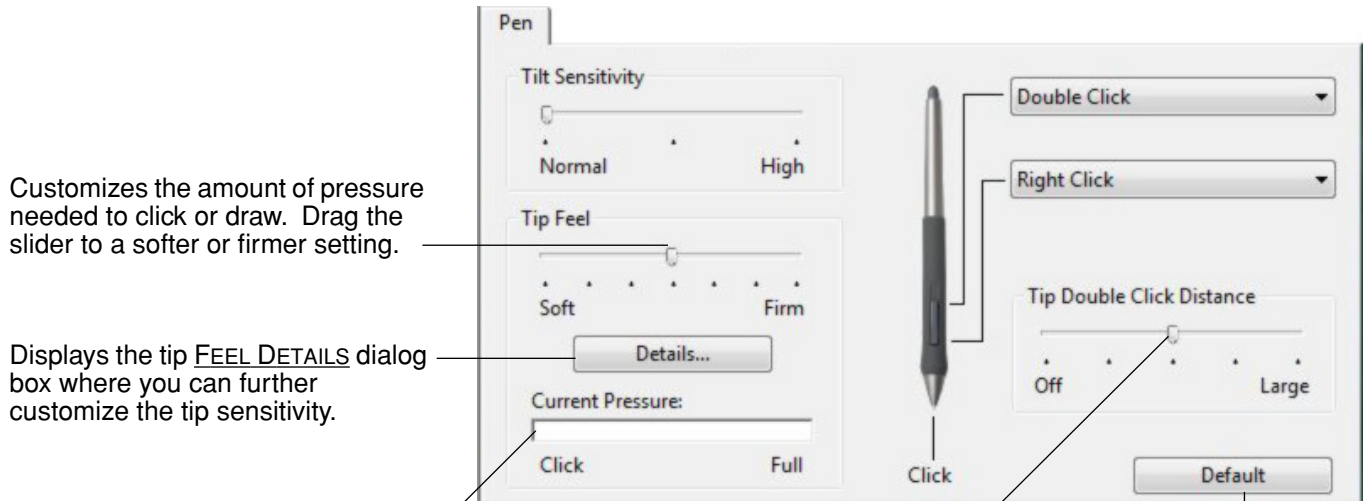
If you will be using these optional tools on your pen display tablet, be sure to visit Wacom's web site for a list of applications that currently support the advanced features of these tools.





ADJUSTING TIP FEEL AND DOUBLE-CLICK

To adjust the tip sensitivity of your Cintiq pen, select the PEN tab. To create broad brush strokes or to click with a light touch, use a soft tip setting. For maximum control while drawing thin lines, use a firm tip setting.



Customizes the amount of pressure needed to click or draw. Drag the slider to a softer or firmer setting.

Displays the tip **FEEL DETAILS** dialog box where you can further customize the tip sensitivity.

With your screen cursor positioned over an empty area of your control panel, press down on the tablet with your pen tip to test the current tip feel setting. You can use the **CURRENT PRESSURE** bar to determine how hard you must press on the pen to reach maximum pressure.

Adjusts the size of the double-click area. A larger setting makes double-clicking easier.

Drag the slider to the **OFF** position if you do not want double-click assist.

Returns the tab settings to their factory default conditions.

Hints:

- Use a soft **TIP FEEL** for a wider range of pressure values with most pressure-sensitive applications.
- In some applications a soft pressure setting can make the pen overreact – any small press on the pen is magnified on the screen. If you experience this, try a firmer **TIP FEEL** setting.
- Double-clicking: To make double-clicking easier, expand the tap area that accepts a double-click (the double-click distance).

Note: A large double-click distance may cause a delay at the beginning of your brushstrokes in some drawing applications. If you notice such effects, try setting a smaller double-click distance and using the side switch to double-click. You can also set one of the ExpressKeys to double-click.





ADJUSTING ERASER FEEL

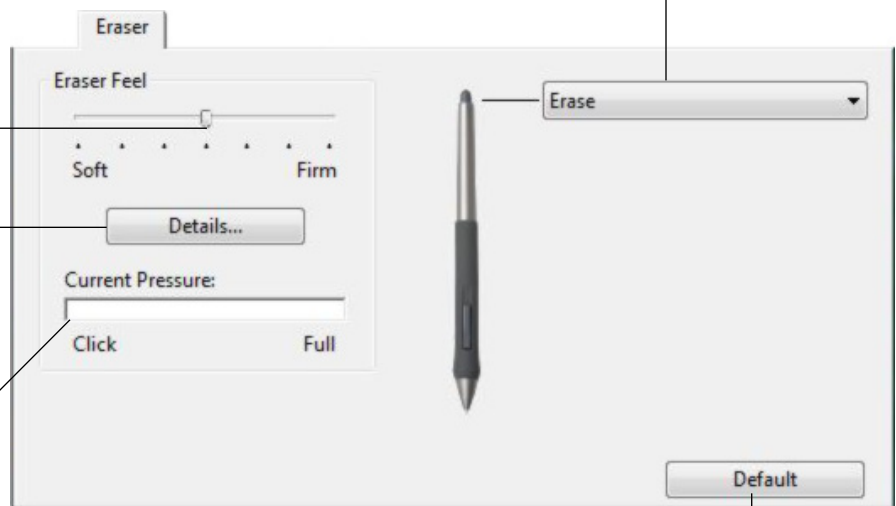
To adjust the eraser sensitivity of your Cintiq pen, select the ERASER tab. To erase with a broad stroke or to click with a light touch, use a soft eraser setting. For maximum control while erasing, use a firm eraser setting.

Select the button function to perform when using the eraser.

Customizes the amount of pressure needed to erase. Drag the slider to a softer or firmer setting.

Displays the eraser FEEL DETAILS dialog box where you can further customize the eraser sensitivity.

With your screen cursor positioned over an empty area of your control panel, press down on the tablet with your tool's eraser to test the current eraser feel setting. You can use the CURRENT PRESSURE bar to determine how hard you must press on the eraser to reach maximum pressure.



Returns the tab settings to their factory default conditions.



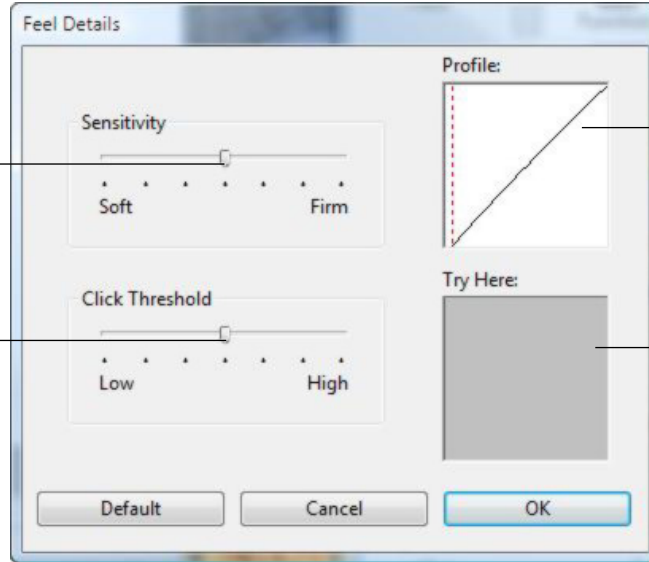
ADVANCED TIP AND ERASER PRESSURE SETTINGS

To further customize tip or eraser pressure settings, from the PEN or ERASER tab click on the DETAILS... button to display the FEEL DETAILS dialog box. The options within this dialog box enable you to change the tip or eraser pressure sensitivity and click threshold settings independently. (In the PEN and ERASER tabs, these settings are adjusted simultaneously with the TIP FEEL or ERASER FEEL slider.)

Important: The TIP FEEL or ERASER FEEL slider overrides the detail pressure settings. If you customize the detail settings, then drag the slider, your detail settings will be removed.

Drag the slider to select a pressure sensitivity setting. If you have a soft touch and want to achieve full pressure without having to apply full force to your pen, choose a softer setting.

Drag the slider to adjust the click threshold level. This setting determines the amount of force required to generate a tip click.



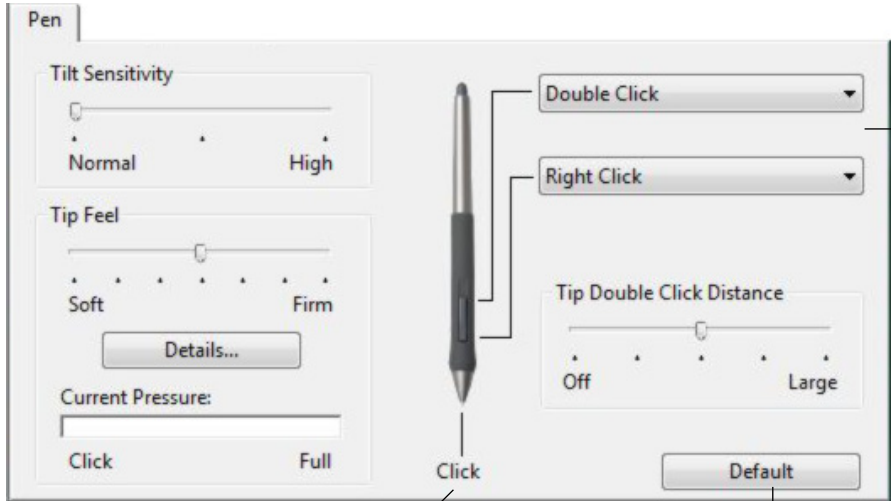
The PROFILE graphically displays the selected pressure SENSITIVITY curve and CLICK THRESHOLD settings.

A curve that increases quickly makes the pen feel more sensitive.

Using your pen tip or eraser, make several strokes within the box to test the results of your changes.

CUSTOMIZING TOOL BUTTONS

Select the PEN tab to change the functions assigned to the side switches and tip of your Cintiq pen. Each tool button can be set to simulate a variety of mouse functions; the pull-down menus enable you to choose the function that will be performed.



Select the button function to perform when pressing the upper or lower side switch.

When you bring the pen tip within 5 mm (0.20 inch) of the tablet surface without touching the tablet and press the upper or lower side switch, the selected function occurs.

Hint: To make double-clicking easier, set the side switch to double-click automatically by selecting DOUBLE CLICK.

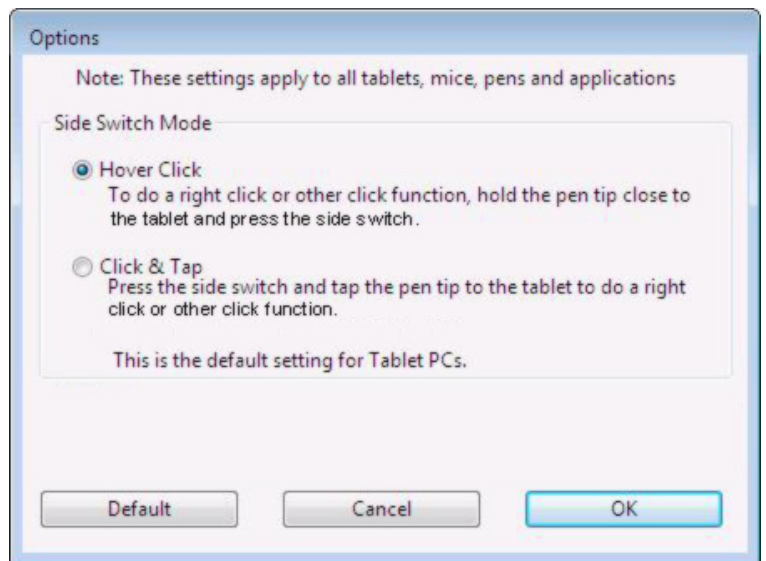
Double-click here to change the function assigned to the pen tip.

Returns the tab settings to their factory default conditions.

- At least one tool button should be set to the CLICK function.
- The tip must be set to CLICK in order to draw in most graphics applications.

Note: You can change the SIDE SWITCH MODE to best fit the way you like to use the pen when making right-clicks or other click functions. To access the SIDE SWITCH MODE settings, click on the OPTIONS... button at the bottom of the control panel. In the OPTIONS dialog box that appears:

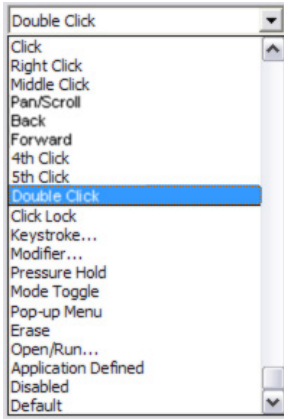
- Select HOVER CLICK to perform click functions without touching the pen tip to the tablet surface.
- When CLICK & TAP is selected, you must press the side switch while touching the pen tip to the tablet surface in order to perform a click function. CLICK & TAP enables the precise placement of your click functions, and is the default setting for Tablet PCs.





BUTTON FUNCTIONS

The following options are available for tool button, tablet control, or Pop-up Menu settings. Please note that not all options are available for all controls or pen display models.



CLICK. This option simulates a primary mouse button click. Be sure at least one button performs this function so you can always navigate and click.

DOUBLE CLICK. Simulates a double-click. For easier double-clicking, use this function instead of tapping twice with the tip of your pen.

MIDDLE CLICK. Simulates a middle mouse button click.

RIGHT CLICK. Simulates a right mouse button click, which displays a context menu.

CLICK LOCK. Simulates holding down the primary mouse button. Press the tool button once to initiate click lock. Press the button again to release click lock. Click lock is useful for dragging objects or selecting blocks of text.

4TH CLICK. Simulates a 4th mouse button click.

BACK. Simulates the BACK command in browser applications.

5TH CLICK. Simulates a 5th mouse button click.

FORWARD. Simulates the FORWARD command in browser applications.

PAN/SCROLL. Enables you to move a document or image in any direction within the active window using your Cintiq pen.

APPLICATION DEFINED. Reports only the button number to the application. This is for applications, such as CAD programs, that have built-in tablet support.

DEFAULT. Returns a button to its default setting.

DISABLED. Disables the button function.

ERASE. Default setting for the eraser. See your hardware manual for information on using the eraser.

INK TOGGLE. (Macintosh.) Toggles the Ink ANYWHERE function of Inkwell on and off. Inkwell automatically recognizes and converts your handwriting into text and inserts it into a document. Note that Ink must be turned on for this function to work. See your Macintosh help for information on working with Inkwell.





KEYSTROKE... Enables you to simulate keystrokes.

MODE TOGGLE... Toggles between PEN and MOUSE mode.

MODIFIER... Enables you to simulate modifier keys.

OPEN/RUN... Opens an application, file, or script.

POP-UP MENU. Displays a Pop-up Menu on your screen. See [customizing the Pop-up Menu](#) for more information.

PRESSURE HOLD. Locks the pressure at the current pressure level until the button is released. For example, you can paint with pressure sensitivity until you reach the brush size that you like. You can then press the button and continue painting with the same size brush until the button is released.

DISPLAY TOGGLE. For multiple monitor systems. Enables you to toggle the screen cursor between the Cintiq pen display and your other displays. When selected, Cintiq can be used either as a pen display (the screen cursor is positioned at the pen tip location) or as a standard Wacom tablet (the screen cursor can be moved across the entire desktop or additional displays). See [working with Display Toggle](#) for more information.

JOURNAL. (Windows Vista and Tablet PC systems that include Microsoft Journal.) Opens Microsoft Journal.

TABLET PC INPUT PANEL. (Tablet PCs and Windows Vista systems that support the Tablet PC Input Panel.) Opens the Tablet PC input panel when you press a tool button set to this function.

SHOW DESKTOP. Minimizes all open windows to display a clean desktop.

SWITCH APPLICATIONS. Brings up the application switching dialog with focus on the next open application. On Windows Vista systems running Aero, Flip 3D will be activated with focus on the next open applications.

EXPOSÉ. (Macintosh.) Tiles all open windows.





- **KEYSTROKE....** Enables you to simulate keystrokes. Selecting this option displays the DEFINE KEYSTROKE dialog box where you can enter a keystroke or keystroke sequence to play back.

You can manually enter a keystroke or keystroke combination in the KEYS entry box. Keystroke combinations can include letters, numbers, function keys (such as F3) and modifier keys (such as SHIFT, ALT, or CTRL for Windows, or SHIFT, OPTION, COMMAND, and CONTROL for Macintosh).

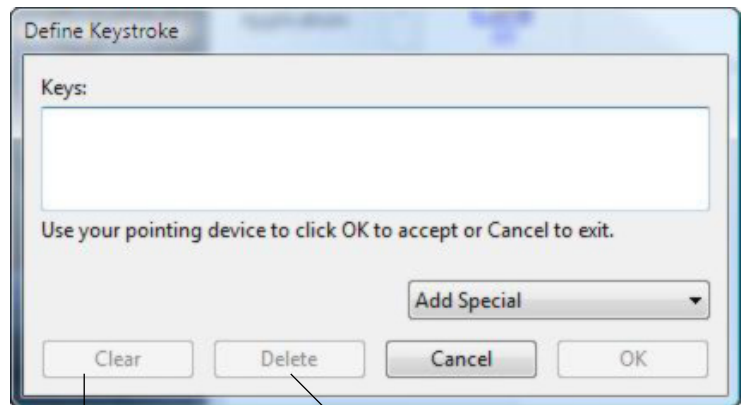
You can also select special keystrokes or keystroke combinations from the ADD SPECIAL drop-down menu. When you make a selection it is added to the KEYS entry box.

After defining a keystroke or keystroke sequence, click OK.

Important: Because the ENTER (Windows) and RETURN (Macintosh) keys can be selected as a defined keystroke, they cannot be used to select OK. You must use your Cintiq input tool to click on the OK button.

If prompted, enter a name for the keystroke definition. The name will be displayed with the respective control or in the Pop-up Menu list, as applicable.

You can create different keystroke functions for different applications. See [working with application-specific settings](#) for more information.



Clears the keystroke entry box.

Deletes only the last entry in the keystroke entry box.



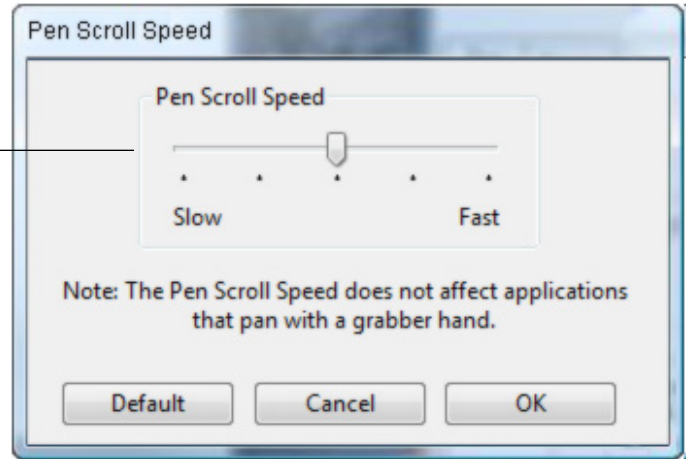


- **PAN/SCROLL.** Lets you move a document or image in any direction within the active application window by pressing a button set for PAN/SCROLL and then dragging with the pen tip across the tablet's active area.

When you select PAN/SCROLL, the PEN SCROLLING SPEED dialog box prompts you to set a scrolling speed that will be used in applications that do not support grabber hand (pixel-level) panning within a document or image.

As you move the pen tip, the document or image is repositioned to follow the direction of pen movement on the tablet. Release the button or lift the pen tip from the tablet surface when you are done.

In some application windows the document will precisely follow the screen cursor as you move the pen tip, while in others it will simply move in the same general direction as the screen cursor.

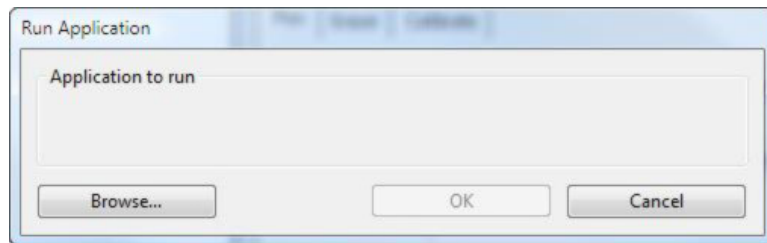


- **OPEN/RUN....** Opens a dialog box where you can select a specific application, file, or script to launch.

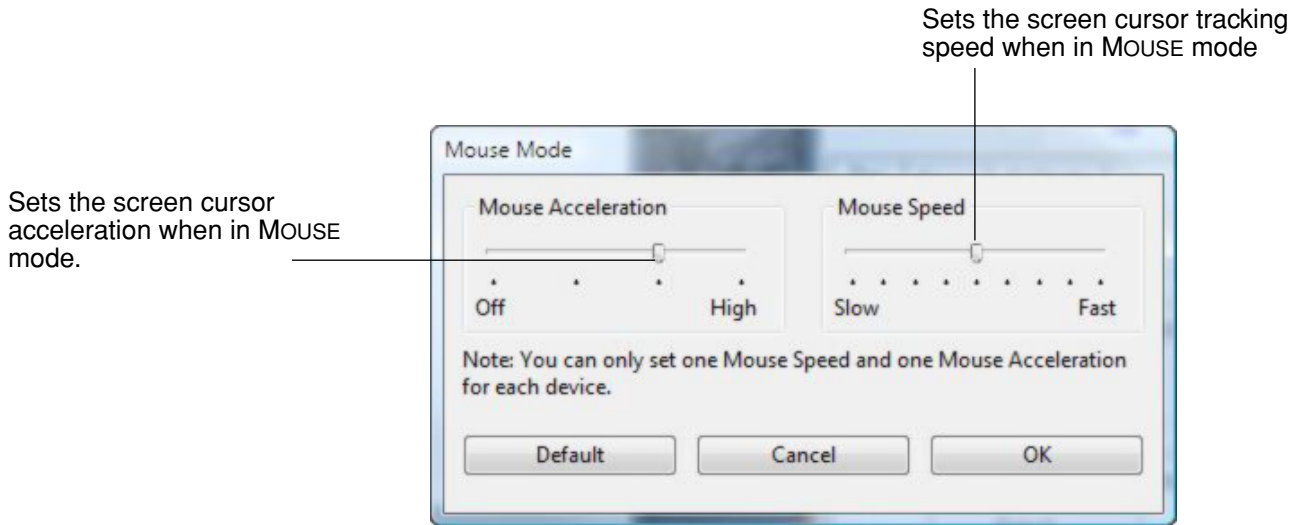
Click BROWSE... to locate an application, file, or script to launch. The selection you make appears in the APPLICATION TO RUN box.

Click OK to accept the selection. The dialog box will close and the OPEN/RUN... option you have selected will be assigned as your tool button option. If your selection is for the Pop-up Menu, it will be displayed in the Pop-up Menu list.

The next time you press the tool button or make a selection from the Pop-up Menu, the defined application, file, or script will launch.

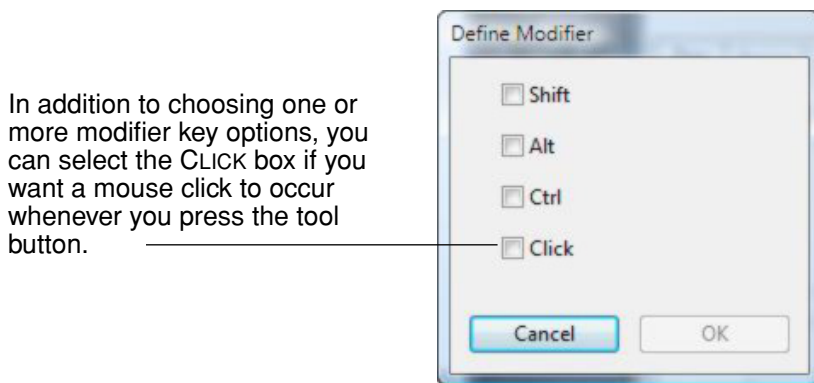


- MODE TOGGLE....** Toggles between PEN mode and MOUSE mode. When first setting a tool button to MODE TOGGLE...., the MOUSE MODE dialog box is displayed where you can adjust the mouse acceleration and speed.



Note: MOUSE mode settings can be accessed from a number of different locations within the control panel. However, for each input tool and application that you are customizing, only one MOUSE ACCELERATION and SPEED setting can be made.

- MODIFIER....** Enables you to simulate modifier key(s) (such as SHIFT, ALT, or CTRL for Windows, or SHIFT, OPTION, COMMAND, and CONTROL for Macintosh). Many applications use modifier keys to constrain the size or placement of objects. Selecting this option displays the DEFINE MODIFIER dialog box where you can assign one or more modifier key functions. After choosing the modifier function(s), click OK.



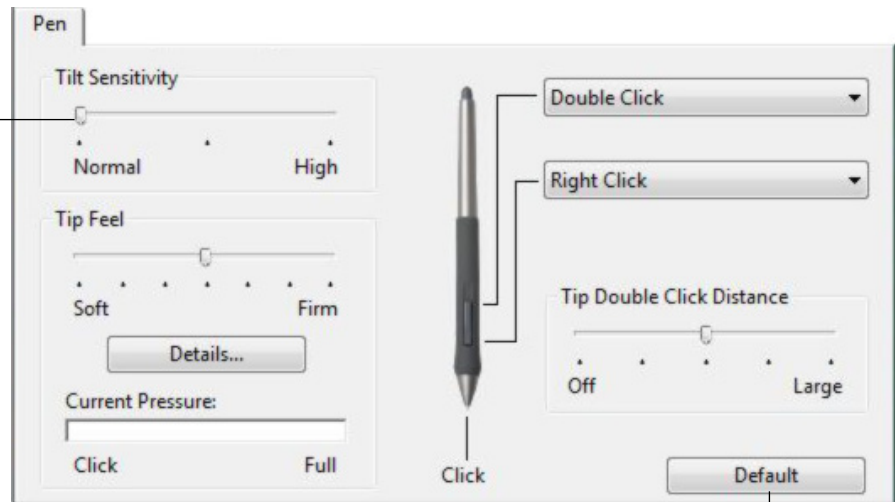


CUSTOMIZING TILT SENSITIVITY

To adjust the tilt sensitivity of your Cintiq pen, select the PEN tab. Tilt sensitivity determines how far you have to tilt the tool to produce the maximum tilt effect in your tilt-sensitive applications; you need to tilt the pen less at high sensitivity than at low sensitivity. Like pressure sensitivity, tilt can be assigned to control brush characteristics. Your tilt setting applies to both the tip and eraser of your tool.

Drag the slider to increase or decrease TILT SENSITIVITY. Then test your new setting in an application that supports tilt to be sure you are getting the desired effect.

Note: Tilt is direction sensitive and can be used in some applications to control brush orientation.



Returns the tab settings to their factory default conditions.

Visit Wacom's web site for a list of applications that currently support tilt.

USING CINTIQ WITH OTHER MONITORS

When you are working with Cintiq and additional monitors on the same system, the screen cursor movement on the standard monitors will depend on your system configuration.

If a second monitor is connected in mirror mode, both Cintiq and the other monitor will show the identical images and screen cursor movement.

If you are using Cintiq with other monitors in extended monitor mode, you have several options for navigating on the other monitors:

- Set one of the ExpressKeys or a pen side switch to the DISPLAY TOGGLE function. You can then press the button to toggle the screen cursor between the Cintiq pen display and your other displays. For example, Cintiq can be used as a pen display (the screen cursor is positioned at the pen tip location) or toggled for use as a standard Wacom tablet (the screen cursor can be moved across the entire desktop or additional displays). See [working with Display Toggle](#) for more information.
- Set one of the pen side switches or pen display tablet ExpressKeys to MODE TOGGLE. You can then quickly switch between PEN mode for working on Cintiq and MOUSE mode for working on the other monitors.
- You can also purchase an Intuos3 tablet and use it to work on the other monitors in PEN mode. The Cintiq pen will work on both Cintiq and the Intuos3 tablet.



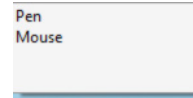


CUSTOMIZING THE TABLET FUNCTIONS

It is as easy to customize your Cintiq pen display as it is to customize the Cintiq pen. Simply open the Wacom Tablet control panel and select the FUNCTIONS icon in the TOOL list. Select a tab to customize, and change settings using the available options.



[Customizing tablet Touch Strips](#)



[Customizing the Pop-up Menu](#)



[Working with application-specific settings](#)



[Working with Display Toggle](#)

[Customizing ExpressKeys](#)



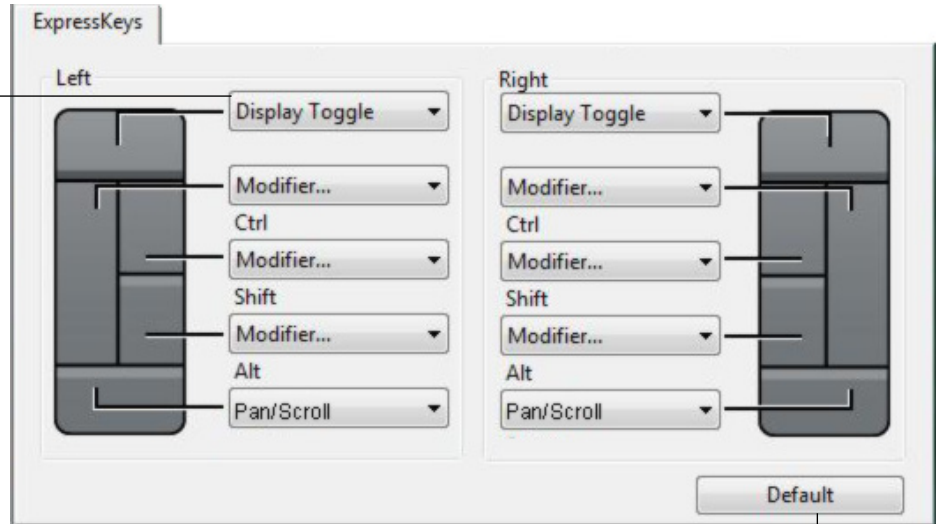
CUSTOMIZING EXPRESSKEYS

Each key can be customized to perform a display toggle, modifier, keystroke, or other function. When you select the EXPRESSKEYS tab, the currently selected function of each key appears in the corresponding pull-down menu. See [button functions](#) for a description of the available options.

To customize a key, select an item from the corresponding pull-down menu.

Note: ExpressKeys functions can be defined for use with specific applications, and any changes you make on this tab apply to the currently selected item in the control panel's APPLICATION list. Unless you define application-specific settings, the tab settings will apply to all applications.

Use the pull-down menus to choose a function that will be performed when the key is pressed.



Note: Options may vary, depending on your Cintiq pen display model.

Returns the tab settings to their factory default conditions.

CUSTOMIZING TABLET TOUCH STRIPS

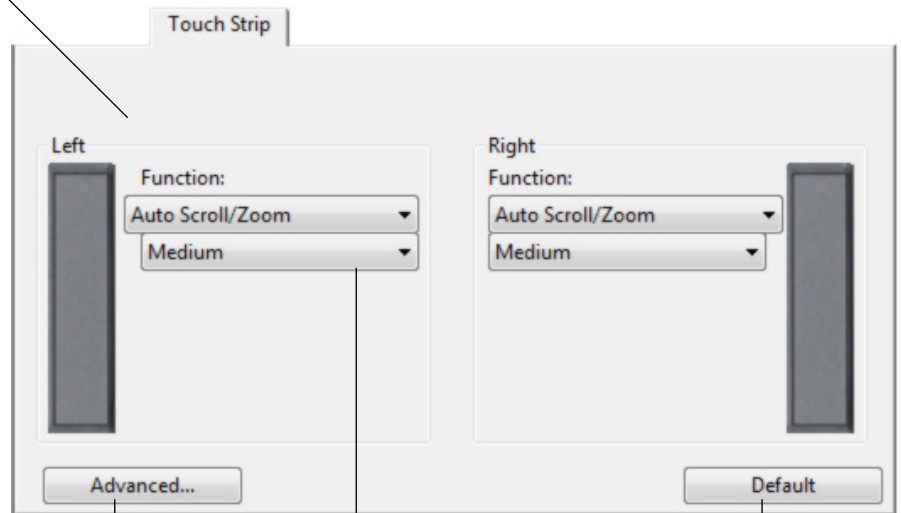
When you select the tablet TOUCH STRIP tab, the currently set function of each Touch Strip is displayed. Each Touch Strip can be customized to issue zooming, scrolling, or keystroke actions. You can also set the Touch Strip function to DISABLED. Refer to your hardware manual for additional information on working with the Touch Strips.

Note: Touch Strip functions can be defined for use with specific applications, and any changes you make on this tab apply to the currently selected application in the control panel's APPLICATION list.

To customize a Touch Strip, choose a Touch Strip FUNCTION to perform when the Touch Strip is in use.

- AUTO SCROLL/ZOOM is the default setting for each Touch Strip. When selected, the Touch Strip zooms in most graphics applications and scrolls in most other applications.
- Choose SCROLL to set custom Touch Strip scroll settings.
- Choose ZOOM to set custom Touch Strip zoom settings.
- Choose KEYSTROKES to define Touch Strip keystroke settings.
- Choose DISABLED if you would like to deactivate the Touch Strip.

Note: Options may vary, depending on your Cintiq pen display model.



Choose a Touch Strip scrolling speed.

Returns the tab and any advanced Touch Strip settings to their factory default conditions.

Click to display the ADVANCED TOUCH STRIP SETTINGS dialog box where you can enable or disable special Touch Strip function areas. [Advanced Touch Strip settings](#) gives you additional details.



- **Touch Strip scroll settings.** Each tablet Touch Strip can be customized to issue scrolling only actions. When SCROLL is selected, an up or down motion on the Touch Strip will cause a scroll up or down action in most applications.

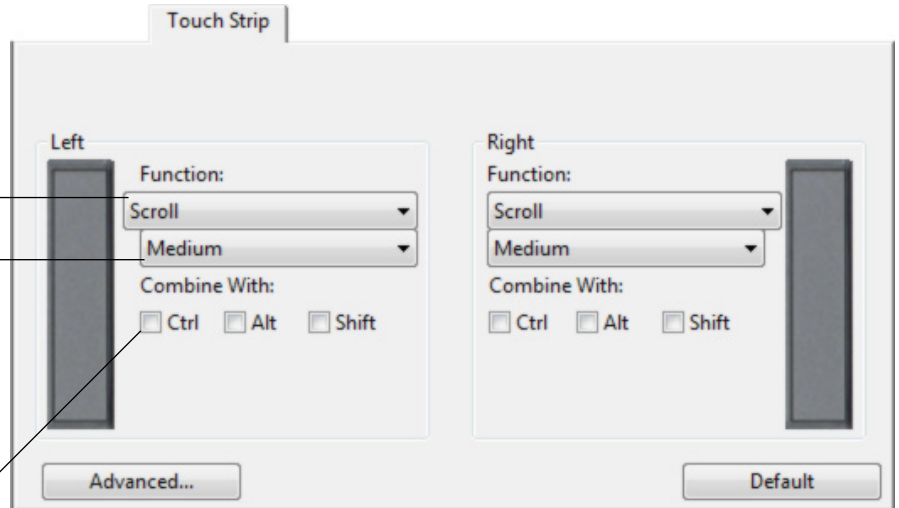
Note: Some applications may interpret scrolling events as zoom events, or may ignore scrolling completely.

When SCROLL is selected, additional options are displayed below the FUNCTION pull-down menu.

Choose a Touch Strip scrolling speed.

When you select one or more COMBINE WITH: modifier key options, the selected option(s) will be sent to the application along with each scroll event. This can be used, for example, to create custom zooming or other actions within an application.

Macintosh: The available options are OPTION, COMMAND (Apple key), CONTROL, and SHIFT.



Note: Options may vary, depending on your Cintiq pen display model.

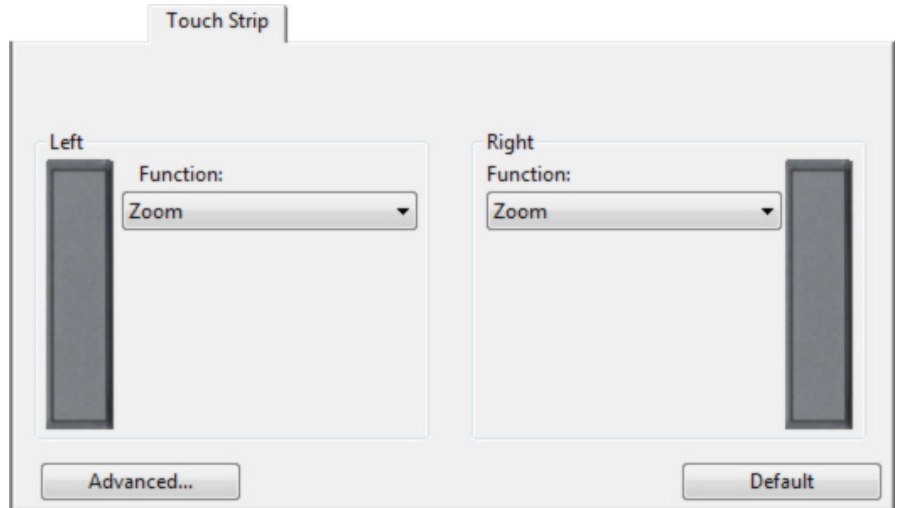
Tip: To zoom images around the current position of the screen cursor when working in Photoshop CS3, select the Touch Strip SCROLL option. Then in Photoshop CS3 select EDIT, PREFERENCES, and GENERAL. In the dialog box that appears, check the option ZOOM WITH SCROLL WHEEL and click OK.





- **Touch Strip zoom settings.** Each tablet Touch Strip can be customized to issue zoom only actions. When ZOOM is selected, an up or down motion on the Touch Strip will cause a zoom in or out action in most graphics applications.

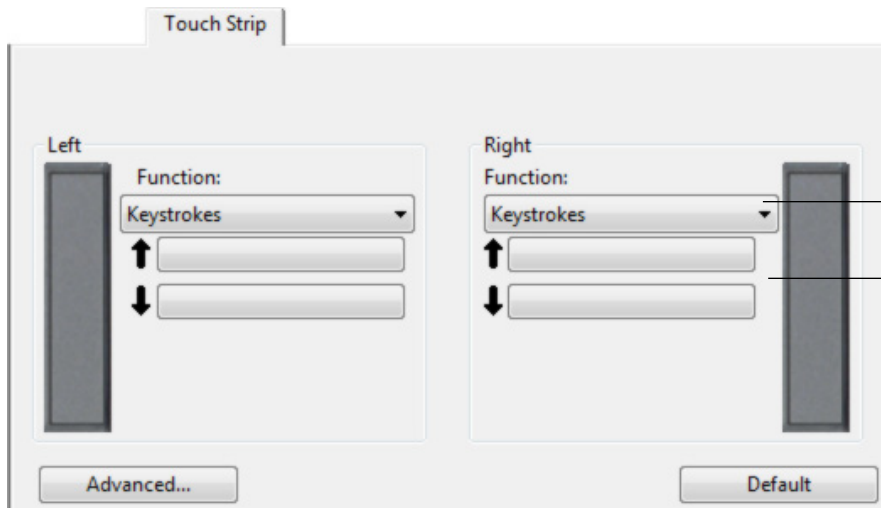
Note: Some applications may interpret zoom events as scrolling events, or may ignore zooming completely.



Note: Options may vary, depending on your Cintiq pen display model.

- **Touch Strip keystroke settings.** Each tablet Touch Strip can be customized to send keystrokes. After you have customized the Touch Strip for KEYSTROKES functionality, a keystroke(s) action will be sent for each Touch Strip event.

Note: To learn which keystroke shortcuts are supported by a particular application, review the documentation that came with the application.



When KEYSTROKES is selected in the Touch Strip's FUNCTION pull-down menu, the tab displays the custom keystrokes options for that Touch Strip.

To customize the keystroke(s) that will be sent when sliding your finger in either direction on the Touch Strip, click on a button and enter the keystroke(s). The new keystroke(s) will be displayed on the button.

Note: Options may vary, depending on your Cintiq pen display model.

Tip: Photoshop users who frequently change brush sizes may want to assign the [and] keys to a Touch Strip. Sliding your finger up or down the Touch Strip will then change the brush size without the need to reach for the keyboard or access the Photoshop BRUSHES palette. This is the default setting for the Touch Strip when pressing the outer ExpressKey. Note that international versions of Photoshop may use different keystroke shortcuts – be sure to check your application's documentation when assigning keystroke settings.





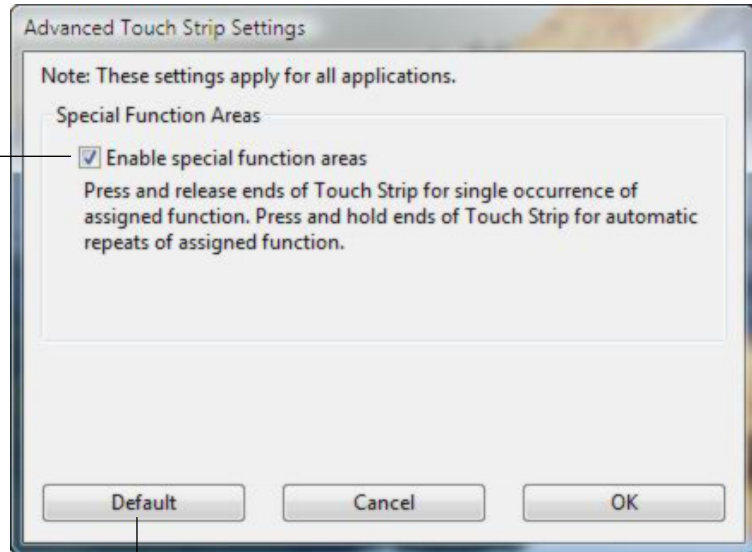
ADVANCED TOUCH STRIP SETTINGS

The tablet Touch Strips can be further customized within the **ADVANCED TOUCH STRIP SETTINGS** dialog box.

When you click on the **TOUCH STRIP** tab's **ADVANCED...** button, the **ADVANCED TOUCH STRIP SETTINGS** dialog box is displayed. The settings within this dialog box are global, and apply to all applications.

If you prefer not to use the continuous and single step operations of the Touch Strip, you can disable them by deselecting this box. This option is selected by default.

Refer to your hardware manual for more information on working with the special function areas.



Resets the dialog box options to their original default conditions.



CUSTOMIZING THE POP-UP MENU

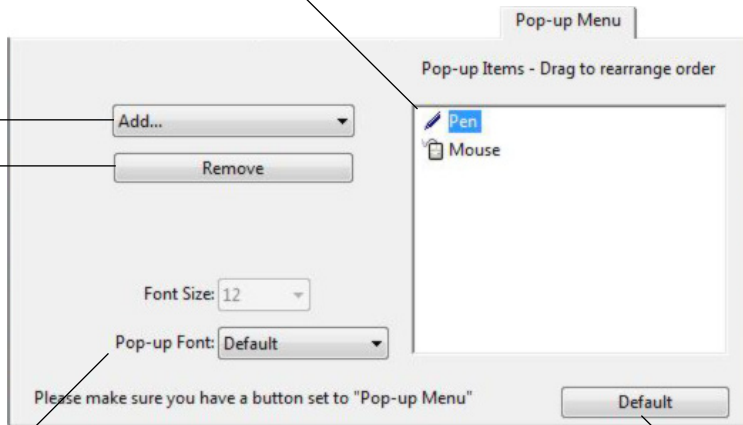
Use the POP-UP MENUS tab to define the available functions on the Pop-up Menu list.

To display the Pop-up Menu, set one of your tool buttons or ExpressKeys to the POP-UP MENU function. Whenever you press that button, the Pop-up Menu is displayed. Select from available items in the Pop-up Menu by clicking on them. To close the Pop-up Menu without making a selection, click outside of the Pop-up Menu.

Displays a list of functions that have been added to the Pop-up Menu. To change the order of an item, drag it to a new location. Double-click on an item to make edits.

Select a button function option to add to the Pop-up Menu list.

Removes the selected item from the list.



Menu options enable you to change the appearance (FONT SIZE and POP-UP FONT) of the Pop-up Menu.

Returns all tab settings to their default values.

Notes:

PEN places your tool in PEN mode.

MOUSE places your tool in MOUSE mode. When adding MOUSE mode to the Pop-up Menu list, the MOUSE MODE dialog box is displayed where you can adjust the acceleration and speed.

Important: This action will delete all Pop-up Menu items that have been defined.

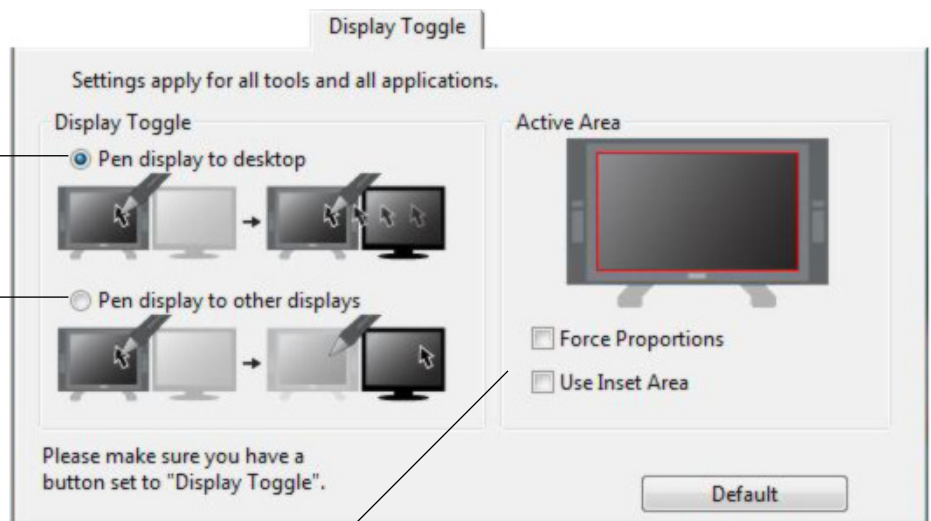


WORKING WITH DISPLAY TOGGLE

DISPLAY TOGGLE is available only on multiple monitor systems. The feature allows you to use your pen on the Cintiq pen display tablet to navigate the screen cursor to any display on your system. After setting one of the ExpressKeys or a pen side switch to the DISPLAY TOGGLE function, you can then press that button to toggle the screen cursor between the Cintiq pen display tablet and your other displays. For example, Cintiq can be used as a pen display where the screen cursor is positioned at the pen tip location, or toggled for use as a standard Wacom tablet where the screen cursor can be moved across the entire desktop or additional displays.

When you open the Wacom Tablet control panel and Cintiq is the selected tablet, the DISPLAY TOGGLE tab will be available if the system has two or more displays. The DISPLAY TOGGLE tab enables you to define how the tablet mapping will be applied to each toggled display.

- When PEN DISPLAY TO DESKTOP is selected and you press a tool button that has been assigned the DISPLAY TOGGLE function, the screen cursor will toggle from your Cintiq pen display to the entire system desktop. Pressing the tool button a second time returns the screen cursor to the Cintiq pen display.
- When PEN DISPLAY TO OTHER DISPLAYS is selected and you press the tool button, the screen cursor is toggled from your Cintiq pen display to another active pen display or monitor. If additional displays are attached to the system, the screen cursor will toggle to each display in turn until it returns to the Cintiq pen display from where the initial toggle began.



ACTIVE AREA options enable you to determine the size of the pen display tablet's active area where the pen is functional. When you make a selection, the red indicator updates to illustrate your choice.

- FORCE PROPORTIONS adjusts the size of the tablet's active area to maintain correct vertical and horizontal proportions between Cintiq and the entire desktop or newly mapped-to display. Depending on your settings, some portions of the tablet active area may no longer be usable when this option is selected.

When deselected, the correct scale or proportions are not maintained – for example, drawing a circle on the Cintiq pen display may create an ellipse on a mapped-to display screen.

- USE INSET AREA limits the tablet's active area to a sizing of 6 x 8 inches. If FORCE PROPORTIONS is also selected, this sizing may be less. When deselected, as much as possible of the entire tablet active area will be used for tablet-to-display mapping.

Important: If you are using application-specific settings with DISPLAY TOGGLE, make sure that each customized application in the APPLICATION list (including ALL OTHER) has a tool button that is assigned to DISPLAY TOGGLE. The easiest way to do this is to assign DISPLAY TOGGLE to an ExpressKey prior to creating any application-specific settings.





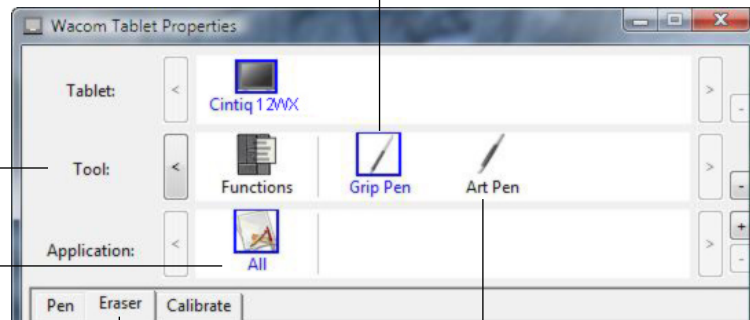
WORKING WITH MULTIPLE TOOLS

The Wacom Tablet control panel is designed to help you customize and keep track of your Cintiq tool settings. The tool you use to open the control panel is automatically selected, and the appropriate tabs for that tool are displayed.

Each Cintiq input tool has a Tool ID that makes it unique. Any custom settings apply only to the specific tool for which they were made. Identical Cintiq input tools will appear as numbered devices. The selected tool is highlighted.

The TOOL list displays an icon for the tablet FUNCTIONS and for each Cintiq input tool that has been used on the tablet.

If application-specific settings have not been added, the ALL icon is displayed and the tool settings apply to all applications.



Tab settings apply only to the selected tool and application.

Removes the selected tool. The FUNCTIONS icon cannot be deleted. The button is inactive when there is only one item in the list.

Other supported tools, such as the Airbrush or Art Pen, will appear in the TOOL list with their respective names. When you use a supported tool on the pen display tablet, the control panel automatically updates the corresponding tab options.

Tip: You can give each tool a different name by double-clicking on the tool's icon and entering a new name. For example, "Drawing Pen" or "Paint Brush". You cannot rename the FUNCTIONS icon.

To add a tool to the control panel's TOOL list, simply use the tool on your Cintiq pen display tablet.

- When a new tool is placed on the tablet for the first time, it will function with the appropriate default settings for that tool. If the Wacom Tablet control panel is open, the tool is automatically added to the TOOL list and you can customize the tool by changing the tab settings.
 - If a similar tool was previously added, the new tool will inherit the settings of the previously added tool. These settings can then be customized for the newly added tool.
- When you select a tool that you have added to the TOOL list, the appropriate tab settings for that tool are displayed. Any changes you make to the tab settings will then apply to that tool. Your changes take effect immediately.

To remove a selected tool from the TOOL list, click on the TOOL list's [–] button. In the dialog box that appears, click DELETE to confirm your selection. The selected tool is removed from the list, along with any custom settings you may have created for it. (A removed tool can be added back to the TOOL list by placing it back onto the tablet.)

Note: The FUNCTIONS icon cannot be removed from the TOOL list.





WORKING WITH APPLICATION-SPECIFIC SETTINGS

You may wish to customize a tool for use with a particular application. For example, you may want a firm pen tip pressure setting in one application and a soft pressure setting in another. The APPLICATION list enables you to add an individual application to the list and then customize your tool settings for that application.

- When no application-specific settings have been created and a tool is selected from the TOOL list, the APPLICATION list displays the ALL icon containing tool settings that apply to all of your applications. In the example below, no application-specific settings have been added for the pen so the ALL icon is displayed and the pen will have the same settings in all applications.



- When application-specific settings are added to the APPLICATION list, the ALL icon changes to ALL OTHER, and an application icon is displayed for the newly added application(s). In the following example, application-specific settings have been added for the pen for both Photoshop and Painter Essentials.



In the example above, if you select the ALL OTHER icon and make changes to the tab settings, your changes will apply to the pen in all applications except Photoshop and Painter, which have their own specific pen settings. If you select the icon for PHOTOSHOP and make changes to the tab settings, your changes will apply only to the pen while you are using Photoshop. Likewise, if you select the PAINTER icon and make changes to the tab settings, those changes will only apply while you are using Painter Essentials.

When you create application-specific settings, you are creating a separate group of settings for the selected tool and application. See the following sections for additional details:

[Creating an application-specific setting](#)

[Changing settings for a specific tool and application](#)

[Removing application-specific settings](#)





CREATING AN APPLICATION-SPECIFIC SETTING

To create an application-specific setting, first choose the pen display and input tool for which you want to create an application-specific setting. Then click on the APPLICATION list's [+] button to display the ADD APPLICATION FOR CUSTOM SETTINGS dialog box.

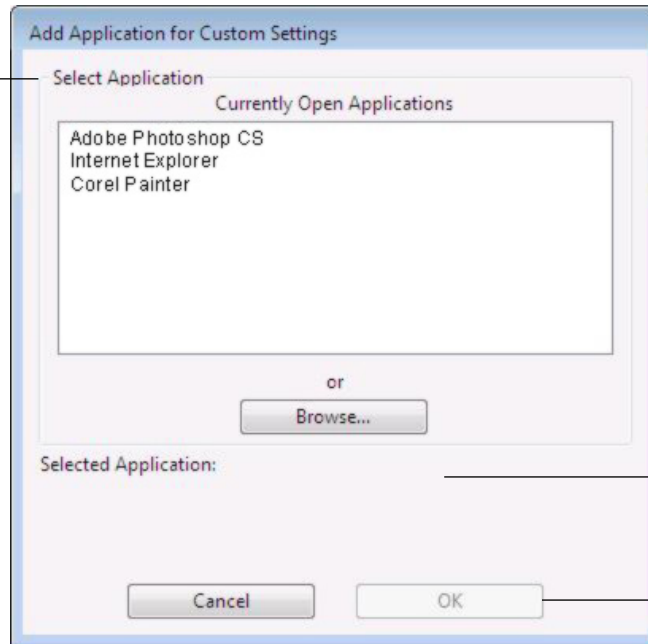
Choose from one of two methods to select an application:

- Open the application for which you want to create custom settings, and then select that application from the CURRENTLY OPEN APPLICATIONS box.
- BROWSE to select the executable file of any application installed on your computer.

Your selection is added to the SELECTED APPLICATION box.

Click OK to complete the process.

Note: If two programs have the same executable file name, they will share the same customized settings.



Displays the name of the selected application.

Click OK to accept your selection and close the dialog box.

After adding an application, its icon appears in the APPLICATION list whenever the respective tool is selected in the TOOL list. Select the application and then customize the control panel tab settings for your tool and the selected application.

Once you have created application-specific settings, applications that have not been customized in this manner will use the tool settings for ALL OTHER.

Tip: First customize settings for one application. When you feel comfortable with the process, you can create more application-specific settings.





CHANGING SETTINGS FOR A SPECIFIC TOOL AND APPLICATION

To change tool settings for a specific application, select the tool and the application and then customize the tab settings.

REMOVING APPLICATION-SPECIFIC SETTINGS

To remove an application-specific setting:

1. In the TOOL list, select the tool from which you want to remove the application-specific setting. Then, in the APPLICATION list select the application you want to remove from the list.
2. Click on the APPLICATION list's [–] button. In the dialog box that appears, click DELETE to confirm your selection. The selected application is removed from the list, along with any custom tool settings that you may have created for it.

Hint: To quickly remove all application-specific settings from a single tool, remove the tool from the TOOL list. Then place the tool back on the pen display. The tool will be added back to the TOOL list using the default settings.

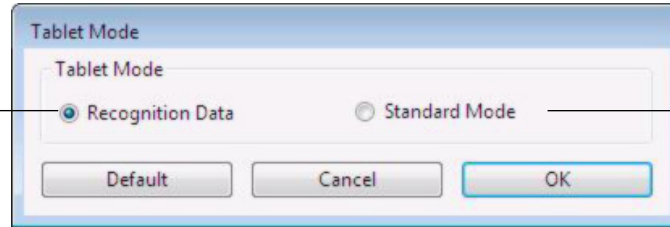




CHANGING THE TABLET MODE

Within the control panel's TABLET list, double-click on the pen display icon to display the TABLET MODE dialog box. The TABLET MODE setting applies to all tools and applications.

Maximum data rate. Required by some handwriting recognition software. This is the default setting.

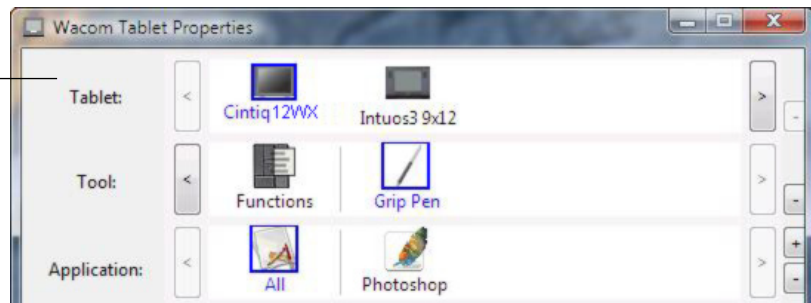


Lowers the data rate, allowing graphics applications to draw a stroke faster.

INSTALLING MULTIPLE TABLETS

The TABLET list displays an icon for any supported tablet that has been detected on your system, and allows you to select the tablet for which your changes will apply.

Select a tablet icon for which to customize tool and application settings.



To add a new tablet, connect it to your computer.

- For USB tablets, the system searches the USB ports. When the new tablet is found, it is automatically initialized.
- If multiple tablets are installed, the tablet used to open the Wacom Tablet control panel is selected as the default tablet.

To remove one of multiple tablets from the driver, in the Wacom Tablet control panel select the tablet to be deleted and click on the [–] button next to the TABLET list. Note that you will need to restart your computer before you can re-add the tablet to the driver.





GLOSSARY

Active area. The area of the pen display tablet where your Cintiq input tools are detected.

Application-specific settings. Cintiq tool and tablet settings that have been customized for individual applications. The Wacom Tablet control panel enables you to customize a tool to behave uniquely in different applications. Your application-specific settings are in effect whenever you use the application. See also [working with application-specific settings](#).

Aspect. The ratio between the vertical and horizontal dimension of the active area of the pen display tablet.

Click force. The amount of force you must apply to the tip of your pen for a click to occur.

Double-click assist. A function of the Wacom Tablet control panel that makes it easier to double-click by setting the size of the double-click distance.

Double-click distance. The maximum distance (in screen pixels) that the cursor can move between clicks and still be accepted as a double-click. Increasing the double-click distance makes double-clicking easier, but may cause a delay in brush strokes in some graphics applications.

Eraser-aware application. A software application that has built-in support for the pen eraser. These applications take advantage of the eraser in different ways, depending on what makes sense for the application.

Fingerwheel. The control wheel on the optional Airbrush.

Journal. A Microsoft Windows application that electronically simulates a physical journal pad, but with the advantages of digital note taking. For example, you can create quick sketches and jot handwritten notes that can be converted to text and sent on to colleagues for digital mark-up. Journal includes a variety of pen, marker, and highlighter tools, plus an eraser that is easily activated by the eraser end of your Cintiq pen. Additionally, your handwritten content is searchable within Journal.

Modifier. Modifier keys include SHIFT, ALT, and CTRL for Windows, or SHIFT, CONTROL, COMMAND, and OPTION for Macintosh. You can customize your Cintiq tool buttons or ExpressKeys to simulate a modifier key.

Mouse acceleration. A setting that allows you to adjust the screen cursor acceleration when your Cintiq input tool is in mouse mode.

Mouse mode. A method for positioning the screen cursor. When you place a Cintiq input tool on the tablet, you can move the screen cursor with a “pick up and slide” motion similar to using a traditional mouse. This is known as relative positioning. See also [pen mode](#).

Mouse speed. A setting that allows you to adjust the speed at which your screen cursor moves when your Cintiq input tool is in mouse mode.

Nib. The replaceable pen tip.





Pen mode. A method of positioning the screen cursor. Wherever you place your Cintiq input tool on the pen display tablet, the screen cursor will jump to the corresponding point on the screen. This is known as absolute positioning, and is the default setting for the Cintiq pen. Also, PEN mode allows you to quickly position the screen cursor without having to first find it and then move it across the desktop. See also [mouse mode](#).

Pixel. The smallest unit of measure on your display screen.

Pop-up Menu. A window that displays a list of keystroke functions and other actions you can perform. You can customize your Cintiq input tool or pen display buttons to display this menu.

Pressure sensitive. A quality of the Cintiq pen tip and eraser that senses the amount of pressure being applied. This is used to create natural-looking pen, brush, and eraser strokes in applications that are pressure sensitive.

Pressure-sensitive application. Any application that supports pressure-sensitive input.

Proximity. The height above the pen display tablet [active area](#) where the Cintiq input tools are detected.

Screen cursor. The pointer on the display screen. Screen cursors come in different shapes (such as an I-beam, arrow, or box), depending on which application you are running.

Tablet PC Input Panel (TIP). The Microsoft Windows Vista Tablet PC Input Panel enables you to use your Cintiq pen to create handwritten notes or work with an on-screen keyboard. The Input Panel dynamically converts your handwriting to text. The information you create can then be inserted into other documents, spreadsheets, or illustrations.

Tilt sensitive. A quality of the Cintiq pen tip and eraser that senses the amount of tilt between the tool and tablet. This is used to create natural-looking pen, brush, and eraser strokes in applications that are tilt sensitive.

Tool ID. A feature that makes each Cintiq input tool unique. If you are working with two identical pens, the tablet will recognize each one as a separate tool. This is particularly useful if you have customized each pen differently.

USB. Universal Serial Bus. A hardware interface standard for connecting computer peripheral devices. USB ports support hot-plugging, which allows you to connect or disconnect a USB device without turning off your computer.

Wintab. An interface standard used by Windows applications for receiving tablet information. Cintiq supports all Wintab-compatible applications under Windows.





INDEX

About the manual	2	Double-click, customizing	9
Adding a new tool	27	Eraser feel, customizing	10
Application-specific settings		advanced	11
changing settings	30	Features, control panel	5
creating	29	Functions, button	13
removing	30	Installing multiple tablets	31
working with	28	Manual, about	2
Button functions	13	Monitors, using Cintiq with other	18
Calibrating, pen display	7	Multiple tablets, installing	31
Control panel		New tool, adding	27
features	5	Pen, customizing	8
lists	6	Pens, optional	8
opening	4	Pop-up Menu, customizing	25
settings	6	Removing settings	30
tabs	6	Settings	
Customizing		changing for specific application and tool	30
double-click	9	control panel	6
eraser feel	10	removing	30
advanced	11	Tablet	
pen	8	customizing	19
Pop-up Menu	25	ExpressKeys, customizing	20
tablet	19	mode, changing	31
ExpressKeys	20	Touch Strips, customizing	21
Touch Strips	21	Tilt sensitivity, customizing	18
tilt sensitivity	18	Tip feel, customizing	9
tip feel	9	advanced	11
advanced	11	Tool buttons, customizing	12
tool buttons	12	Touch Strip	
Touch Strips	21	advanced settings	24
advanced settings	24	customizing	21
keystroke settings	23	keystroke settings	23
scroll settings	22	scroll settings	22
zoom settings	23	zoom settings	23
Display Toggle, working with	26		





Wacom Cintiq®

Software User's Manual

English version 3.0, June 22, 2007

Copyright © Wacom Co., Ltd., 2007

All rights reserved. No part of this document may be reproduced except for your express personal use.

Wacom reserves the right to revise this publication without obligation to provide notification of such changes.

Wacom does its best to provide current and accurate information in this document. However, Wacom reserves the right to change any specifications and product configurations at its discretion, without prior notice and without obligation to include such changes in this document.

Tool ID and DuoSwitch are trademarks, and Cintiq and Wacom are registered trademarks of Wacom Co., Ltd.

Adobe, Reader, and Photoshop are either registered trademarks or trademarks of Adobe Systems Incorporated in the United States and/or other countries. Microsoft, Windows, and Vista are either registered trademarks or trademarks of Microsoft Corporation in the United States and/or other countries. Apple, the Apple logo, and Macintosh are registered trademarks of Apple Computer, Inc., registered in the U.S. and other countries.

Any additional company and product names mentioned in this documentation may be trademarked and/or registered as trademarks. Mention of third-party products is for information purposes only and constitutes neither an endorsement nor a recommendation. Wacom assumes no responsibility with regard to the performance or use of these products.

ExpressKey is a registered trademark of Ginsan Industries, Inc., and is used with permission.

